

**Hampshire Admission Forum
Hampshire County Council**

BY EMAIL ONLY: admissions.team@hants.gov.uk

21 December 2022

CONSULTATION ON SCHOOL ADMISSION ARRANGEMENTS FOR 2024-25

After receiving concerns about access to local school places from residents of Aldershot's new Wellesley Estate, the Wellesley Residents' Committee (WRC) agreed to hold a schools' 'forum' to discuss parents' difficulties in further detail.

The forum took place on 17th October and many local parents expressed, specifically, their difficulty obtaining secondary places at The Wavell School. This is despite its relative closeness to the Estate, and the ease of travel (by foot, bicycle, and the very frequent Number 1 Stagecoach bus service), in comparison with Alderwood School.

As such, WRC request that the Admission Forum consider extending the catchment area of The Wavell to cross over with Alderwood's to include the Estate. This would increase parental choice whilst helping avoid the existing high number of successful appeals (leading only to increased costs for the Local Authority and animosity between parents and schools). In fact, in its original submission on the planning application for the Estate, Hampshire County Council said that Wellesley's eastern primary school – still yet to be built – would be formally linked with The Wavell with a two-form expansion budgeted for to accommodate these additional secondary children. This seems no longer to be the case.

There is clear strength of feeling on this issue with [an online petition](#), started by local parent Eugene Kessler, having received in excess of 250 signatures so far. Councillors at borough and county level also support WRC's and local parents' calls for an extension.

Therefore, we would be grateful if you would give careful consideration to our request.

Yours faithfully,
Wellesley Residents' Committee

Catchment areas for The Wavell School and Alderwood School

As Hampshire County Councillor, I am writing to support the request of Wellesley Residents' Committee and residents of the Canal Estate, Aldershot, which lie in my Division of Aldershot North, for catchment areas of The Wavell School and Alderwood School to include these estates in 2024-2025.

Background

When the Master Plan for Wellesley Estate was drawn up, Wellesley developer Grainger agreed to contribute towards the funding of secondary places at The Connaught School (later to be included as the secondary campus of the all-through Alderwood School) as this was a less expensive option than providing a new secondary school on Wellesley. However, Grainger agreed to contribute towards the funding of two primary schools (West and East), West now operating as The Cambridge Primary School, and East to be built ready to open in September 2025.

To build out Wellesley, Grainger issued, and continues to issue, competitive contracts to builders to construct phases. These builders are responsible for selling the housing that they build. Because the builders issue their own sales literature, residents have seen sales literature that promoted The Wavell School as the local secondary school to which they could apply. This sales literature, together with misunderstanding about what is meant by "parental choice" or "parental preference" when parents nominate schools, caused dissatisfaction and frustration when parents later learned that their estate is in the catchment area of Alderwood School, which has places available, so their secondary-age children are not accepted for The Wavell School.

The map below shows the catchment area for Alderwood School (with the secondary school site S in the south-east corner) and part of the catchment area for The Wavell School (with the school site S in the south-west corner at the junction of the A3011 Lynchford Road and the A325 Farnborough Road).

The other major source of dissatisfaction and frustration are the difficulties in getting to Alderwood School secondary on foot or by public transport, compared with the ease of access to The Wavell School. These difficulties also apply to the Canal Estate, which comprises isolated married quarters for Army families.

Issue raised with Wellesley Residents Trust and Hampshire County Council

As the Hampshire County Council nominee to Wellesley Residents Trust, I raised the issue at a Board meeting this year.

As the County Councillor for Aldershot North, I attended a meeting in Winchester on the issue with the Cabinet Member responsible for Children and Young People, the County Councillors for Aldershot South and Farnborough South, and Council Education Officers. However, it was then apparent that the only way forward was to put the case to the Hampshire Admission Forum.

Wellesley Residents' Committee organise Education Forum

At that time, Wellesley residents formalised arrangements to elect a new Wellesley Residents' Committee.

At the AGM, they agreed to hold an Education Forum, which was attended by Wellesley residents, The Wavell School Headteacher, an Alderwood School Governor, a Senior Teacher from The Cambridge Primary School, County and Borough Councillors, and the Grainger Community Development Manager. Wellesley Residents' Committee member Cllr Calum Stewart chaired the Education Forum.

The Education Forum attendees had a copy of the letter from the Hampshire County Council Cabinet Member responsible for Children and Young People (attached). The penultimate paragraph indicated the option to send comments and responses for consideration by the Hampshire Admission Forum, who would make recommendations to the Executive Member for Children's Services decision day on 21 February 2023.

Those present at the Education Forum therefore unanimously agreed that the Wellesley Residents' Committee should submit comments to the Hampshire Admission Forum and accepted my offer to support their submission.

Inclusion of Canal Estate in the Petition that Eugene Kessler launched

The Canal Estate in the north-east corner of the Alderwood School catchment area presents residents' secondary-age children with the same difficulties as Wellesley residents' secondary-age children in getting to Alderwood School secondary on foot or by public transport.

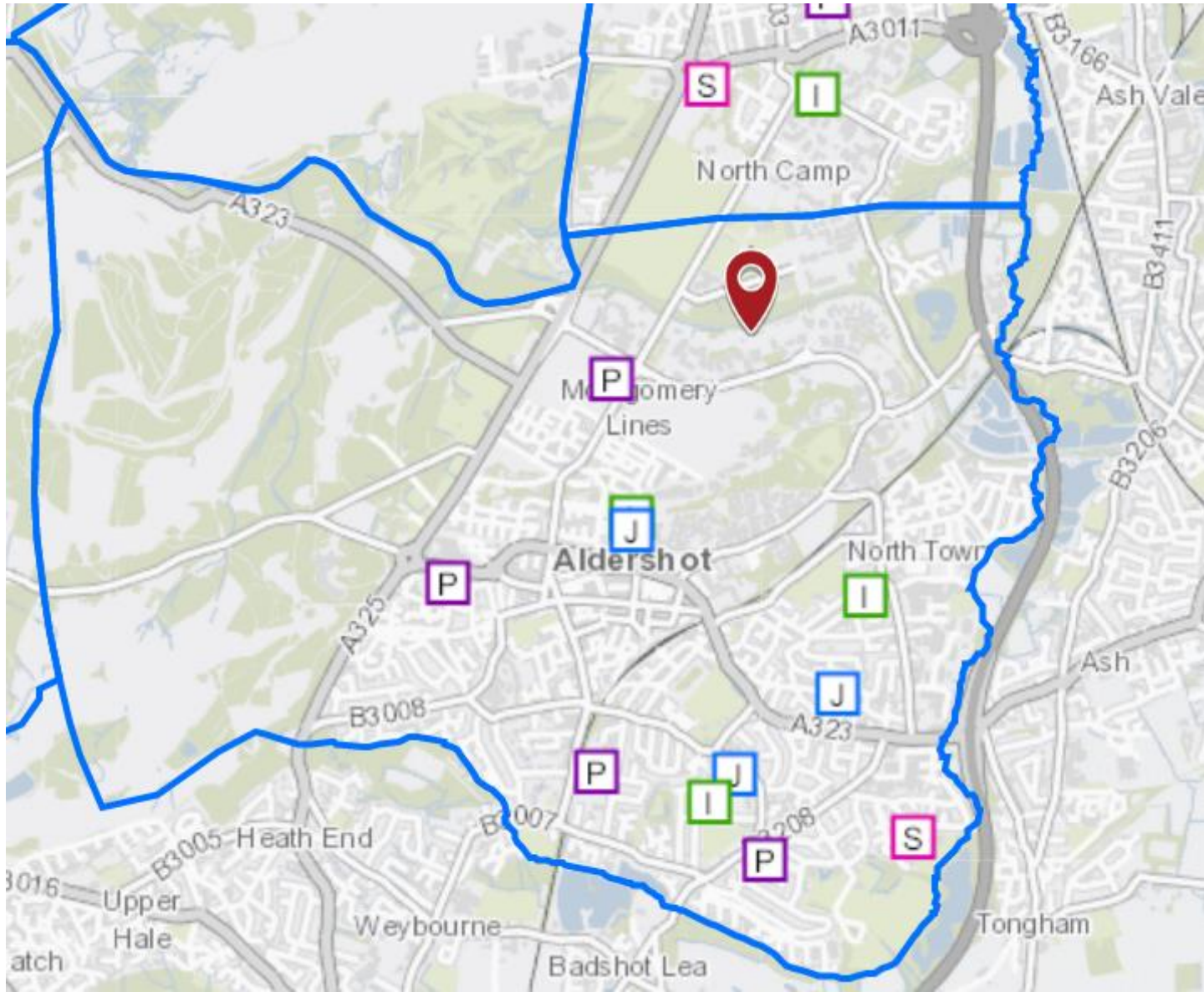
It was therefore considered fair to include the Canal Estate in the Petition that Eugene Kessler launched: www.change.org/p/extend-the-wavell-school-catchment-area-to-include-the-wellesley-development-and-the-canal-estate

Recommendation

In view of the considerable community support for the inclusion of the Wellesley and Canal Estates in the catchment areas of The Wavell School and Alderwood School, Hampshire Admission Forum recommend that the Executive Member for Children's Services should agree to this proposal at the Decision Day on 23 February 2023.

Cllr Alex Crawford

22 December 2022



F.A.O.: Ms Lucy Crockford

Letter by email:
LCrockford@graingerplc.co.uk

Enquiries to	Councillor Roz Chadd	My reference	RC/SM/ML
Direct Line	01962 846412	Your reference	
Date	14 October 2022	E-mail	roz.chadd@hants.gov.uk

Dear Lucy

Re: School Place Planning, Wellesley, Aldershot

Thank you for the invitation to attend your residents meeting on 17 October 2022. Unfortunately, I am unable to attend this meeting, however, the position is set out below.

The Cambridge Primary School over subscription

There were sufficient Year R places in the Aldershot planning area on the national offer day of 19 April 2022, with 505 offers made from 520 places. By 31 August 2022, the day before schools returned, that had increased to a total of 521 offers.

The Cambridge Primary School was named as a preference on 199 on-time applications, with 97 first preferences. The following places were allocated on offer day in line with the school's oversubscription criteria:

EHCP naming school	2
1) Looked after & previously looked after children	1
2) Children of a member of staff	0
3) Children who will have a sibling at the school	27
4) Children who live in the catchment area	18
5) All other children	12

Of the 27 children who had a sibling at the school, 13 also lived in the catchment area. Therefore, 31 offers were made to children who lived in the catchment area.

The final offer was made to a child under criterion 5, who lived 0.735 miles away. The school was therefore able to meet both sibling and catchment demand.

There were 38 first preference applications that were refused because the school was oversubscribed, and they did not rank high enough within the school's oversubscription criteria to qualify for a place. The breakdown of schools allocated to those children were:

Talavera Infant School	7
Marlborough Infant School	6
St Michael's C of E Controlled Infant School	5
Wellington Community Primary School	4
Alderwood School	3
Surrey resident attending a Surrey school	3
Park Primary School	2
South Farnborough Infant School	2
Cherrywood Community Primary School	1
Pirbright Village Primary School	1
Shawfield Primary School	1
Southwood Infant School	1
St Joseph's Catholic Primary School	1
The Grove Primary School	1
Total	38

There were sufficient school places for children in the local area, and it would have been detrimental to other local schools and prejudicial to the efficient use of resources had an extra class been provided at The Cambridge Primary School to accommodate out catchment children under criterion 5.

Due to the availability of other places in the local area, there was also no requirement to meet basic need in the area, and therefore, growing schools funding could not be provided for The Cambridge Primary School to provide an extra class.

The Cambridge Primary School years 5 and 6

As a new school, The Cambridge Primary is growing from the bottom up, so does not yet have a year 5 or 6 cohort. This is due to the affordability of running classes with limited numbers. Unfortunately, when a new primary school uses sibling and catchment to give priority, parents moving into the area may have difficulty securing a place because the school is already full in the year group or, during the early years of its opening, it does not run the required year group. The DfE's School Admissions Code prohibits local authorities from holding places for families moving into an area outside the main round.

In year admissions

Unfortunately, it is not uncommon for families moving to a new area during the school year to have difficulty securing school places at popular and/or local schools. We fully sympathise with families in this situation, however, as advised, the DfE's School Admissions Code prohibits local authorities from holding places for families moving into an area outside the main round.

In these circumstances, if the school is full and cannot accommodate the request for a place, in line with the Council's published advice, there is an established process for supporting parents who have been refused a place, that includes advising on the next nearest school with a place available. There is also an assessment of whether that alternative place is appropriate and reasonable or whether consideration is needed under the Fair Access Protocol or under excepted pupil status.

The second Wellesley primary school

Based on pupil forecast data and the programme of occupations for the development, it is anticipated that the second new primary school will be required to open in September 2025. The new school would eventually provide an additional 420 places, and building work is expected to commence in 2024. While there is provision to also expand The Cambridge Primary School by a third form of entry (an additional 210 places), it is predicted that this will not be completed before 2027. This is to ensure that two schools of a viable size are built and able to operate successfully, rather than having one very large school and another very small, while the development continues to build out.

Secondary school places

The catchment secondary school serving Wellesley is Alderwood School which currently has spare capacity. We anticipate between 4 and 5 additional forms of entry required due to the Wellesley development once completed, or approximately 808 secondary age children. Due to the existing capacity at Alderwood School, we were not able to negotiate for sufficient developer contributions to provide the full 808 additional school places, so it is essential that capacity is utilised as part of the initial provision for Wellesley pupils.

An extension of Alderwood School is proposed to open in 2025, providing an initial 2 forms of entry (or 300 additional places). This will incorporate some of the existing surplus space at the school as well as new accommodation and will be funded by a proportion of the available developer contributions. It is anticipated that further secondary demand will be required once the year 6 cohort at the second (eastern) primary school transfers to year 7, which based on the current programme, would not be before 2032. The remaining developer contributions will be used to provide the additional accommodation required at that point.

If it is concluded that the Alderwood site is then at capacity, we could consider the expansion of the Wavell School and any potential catchment changes necessary.

The 2024/25 admission arrangements for Hampshire schools will be consulted on between 14 November 2022 and 30 December 2022. There is no proposal to make a change to the catchment area as part of those arrangements. However, members of the public and other interested parties are entitled to send comments and responses for consideration by the Hampshire Admission Forum, who will make recommendations to the Executive Member for Children's Services decision day on 21 February 2023.

I trust that this provides a comprehensive summary of the school capacity and associated admissions. Should parents wish to discuss any specific cases they should contact The School Admissions Team on 0300 555 1377 who would be pleased to help.

Yours sincerely



Councillor Roz Chadd
Executive Lead Member for Children's Services

cc Councillor Jib Belbase

Sadler, Nicholas

Subject: FW: Consultation on school admission arrangements for 2024-2025

From:

Sent: 30 December 2022 22:29

To: Admissions Team <admissions.team@hants.gov.uk>

Subject: Consultation on school admission arrangements for 2024-2025

Caution: This is an external email and could contain malicious content. Do not open any links or attachments if you were not expecting them. If the e-mail looks suspicious, please report via the 'Report Phishing' Button found on your toolbar.

Hello Hampshire Admission Forum,

Let me express my thoughts and feelings related to current admission arrangements please. Results of raised concerns and requests are shown in petition signatures which of now is 366 and still growing. <https://chng.it/yHX7qzGmLv>



Sign the Petition

Extend the Wavell School catchment area to include Wellesley and Camp Farm Estate

chng.it

I'd like to provide you an illustration of a ludicrous circumstance brought on by the current admissions procedures (criteria).

A child from a Wellesley family submitted an application to attend "The Wavell School," which is the closest of all schools, in year 7. Unfortunately, HCC chose to send this child to the "Fernhill School," which is more than 4 times farther away, making life for this family more challenging.

My argument is that you are influencing people's lives while hiding behind an automatic admissions process that ignores crucial considerations.

Please allow me to address one additional admissions-related matter (waiting list). Some children have been on waiting lists for more than a year. When the new admissions year arrives, their predicament is still unresolved. They are still requesting a spot in the admitted school but are left in the middle of nowhere. The previous waiting list with children is forgotten when a new admissions year approaches. Children who are still on the waiting list must apply for an in-year transfer and wait on a new waiting list. What remedy is offered to those kids, and what advantages do they have over kids who are applying for the first time?

I believe this matter deserve to be looked at and taken care of resulting in proposal prioritising children waiting for so long time.

Please give me the opportunity to discuss our needs with you in person if possible.

Yours faithfully,

Extend the Wavell School catchment area to include Wellesley and Camp Farm Estate



[Eugene Kessler](#) started this petition

Wellesley residential development and Canal Estate, Aldershot. Alteration in "catchment area" for school admission.

We demand that the current school catchment area be changed and a new one created that better serves the requirements of our families. By creating a shared catchment area between "The Wavell School - Farnborough" and "Alderwood School - Aldershot" all residents will have another preference to a local secondary school.

Wellesley now has around 1100 units and plans to develop 3850 homes over the next few years.

Our children may safely walk to the nearby school, "The Wavell School," rather than taking a car or other kind of public transport.

The first shared catchment proposal was made in 2007, but at the time our residency didn't yet exist. After 15 years, there is an increasing need for secondary school spots, so we must act right away and consider our current needs.

The Canal Estate, which serves mostly Military Families, should also be included as the School is in walking distance and a lot of Families living there do not get to choose the area they live in due to the nature of their jobs.

Hampshire County Council can make those changes to support Wellesley and Canal Estate Residents.

426 have signed. Let's get to 500!

At 500 signatures, this petition is more likely to be **featured in recommendations!**

Recruiter

Eugene Kessler signed this petition

Sign this petition

First name

Last name

Email

Portsmouth, PO1

United Kingdom

Yes! Tell me if this petition wins, and how I can help other relevant petitions

No. I do not want to hear about this petition's progress or other relevant petitions.

Do not display my name and comment on this petition

We process your information in accordance with our [Privacy Policy](#) and [Terms of Service](#).

Sadler, Nicholas

Subject: FW: School Place Planning, Wellesley

From: Crawford, Cllr A
Sent: 21 December 2022 09:52
To: Calum Stewart; Crocker, Steve
Cc: Littlehales, Mandy; Chadd, Cllr R; Lucy Crockford; Withers, Cllr B
Subject: RE: School Place Planning, Wellesley

Dear Calum,

Thank you for including me in the email.

Would the possibility of revising the estimates for school places associated with Wellesley have been in the original Master Plan that Grainger, Hampshire and Rushmoor signed up to?

Also, does current School Place Planning take into account the addition of about 700 flats in Aldershot town centre in the Union Yard and Shaviram developments?

Best regards,

Alex

Cllr Alex Crawford
Aldershot North Division
Hampshire County Council
17 Cargate Avenue
ALDERSHOT, Hants GU11 3EP
Email: Alex.Crawford@hants.gov.uk
Mob.: 07891 979 457
Tel.: 01252 314708

From: Calum Stewart
Sent: 20 December 2022 21:58
To: Crocker, Steve
Cc: Littlehales, Mandy; Chadd, Cllr R; Lucy Crockford; Withers, Cllr B; Crawford, Cllr A
Subject: School Place Planning, Wellesley

Caution: This is an external email and could contain malicious content. Do not open any links or attachments if you were not expecting them. If the e-mail looks suspicious, please report via the 'Report Phishing' Button found on your toolbar.

Dear Steve,

I write further to Cllr Chadd's letter regarding School Place Planning for Wellesley, Aldershot.

I've been reviewing HCC's original representations to the planning application for the Estate and it appears there was a significant underestimate on how many secondary school places would be required. HCC's letter

of 14th October 2022 says approximately 808, however representations in 2013 (page 12, attached) said the estimate was between 670 and 700.

Can you confirm who will be funding these additional (up to) 138 secondary places, please?

Thanks in advance,
Calum

Cllr. Calum Stewart
Councillor for Knellwood Ward

calum.stewart@rushmoor.gov.uk | 07527583523
Civic Offices, Farnborough Road, Farnborough GU14 7JU

RUSHMOOR
BOROUGH COUNCIL

From: Kirsty Potter
Sent: 06 December 2022 13:53
To: Admissions Team
Subject: Consultation Response

To whom it may concern,

Please find attached my recent communication to Cllr Bill Withers and Brian Pope regarding my correspondence with HCC since 2007, with regards to the Wavell School's Catchment and Linked School requests.

Please let me know if you would like me to attend an Admissions Forum to explain any part of this correspondence. It is extremely unfair that we have such a tiny catchment compared to the other 3 Rushmoor school; it is illogical that the Wellesley Estate is not within our catchment and it is unfair on parents that the Cambridge Primary School is not a Wavell Linked School.

Kind regards
Amanda Rowley
Headteacher
The Wavell School

Dear Bill

As requested at the Wellesley Forum, please find attached the history of the communication between the Wavell School and Hampshire County Council regarding the Aldershot Urban Extension being recognised as our catchment and thus the logic of the Cambridge Primary School being linked to the Wavell.

Please find attached correspondence as below:

14 November 2007	Amanda Rowley to Ann Begley (HCC County Services Manager).
14 December 2007	Alex Munro (HCC School Organisation Officer) to Amanda Rowley.
30 March 2012	AA Camfield (Chair of Governors) to John Clarke (Deputy Director of Children's Services Education & Inclusion), including Rushmoor Schools' Catchment Maps (2011) which show how much smaller the Wavell catchment is compared to Connaught/Alderwood.
5 December 2017	Email from Amanda Rowley to Martin Goff (Strategic Development Lead), including RBC planning application.
10 July – 24 September 2018	Trail of communication between Amanda Rowley, Martin Goff, Louise Crolla (HCC Principal Admissions Officer).
19 October 2018	Amanda Rowley to Louise Crolla and replies.
18 November 2019 - 16 January 2020	Trail of communication between Amanda Rowley, Martin Goff, Louise Crolla and Gemma Bowry (HCC Strategic Development Officer).
8 March 2022 – 10 March 2022	Trail of communication between Amanda Rowley, Peter Colenutt (HCC Assistant Director, Strategic Development and Capital Delivery) and Gemma Bowry.

I have also included a press release from the time when Oak Farm School closed making it clear that HCC, at that time, was speaking publicly about the expansion of the Wavell School linked to the AUE.

I hope this gives you a flavour of the ongoing correspondence regarding the rationale for the AUE to be in the Wavell Catchment and thus be linked to the Cambridge Primary School.

Kind regards

Amanda Rowley

Headteacher
The Wavell School
Tel. 01252 341256

School plan given the green light

by Pete Castle

PLANS to move a successful special school on to the site of Oak Farm Community School have been given the green light.

At a meeting on Wednesday afternoon, Roy Perry, Hampshire County Council's member for children's services, agreed a plan that will see Samuel Cody College, which currently shares a site with the Wavell School in Farnborough,

site of the current Oak Farm School.

Oak Farm is due to close for good as a secondary school at the end of July, with its remaining pupils transferring to other schools in the area.

The closure had led to some doubt as to how more than 100 adult education Courses, clubs and activities would continue on the site without the Oak Farm School structure to help maintain it.

Now it is expected that the facilities for the range of services currently on offer will be taken over by governors of Samuel Cody College.

Samuel Cody, which was rated as 'outstanding' by Ofsted inspectors last year, currently has 119 pupils aged 11 to 18 with moderate learning difficulties, but it has grown in recent years and lacks space at its present site on Lynchford Road in North Camp.

Council bosses hope that moving the special school to

the Oak Farm site will improve The Oak Farm School site. facilities for Samuel Cody's - pupils, keep community facilities running on the Oak Farm site, and provide space for expansion at the Wavell School.

The Wavell is expected to have to expand in the coming years as the 4,500 houses of the Aldershot Urban Extension are built on former army land nearby.

Currently there are at least 134 courses at Oak Farm on offer to community learners, such as parenting classes, basic skills and vocational courses, and skills for independent living for adults with a learning difficulty

Council bosses expect that Samuel Cody College would have an important role to play in securing continued provision for the community, as well as developing new courses in the future after talking to people in the area.

Headteacher Anna Dawson said that the college already had lots of experience in managing a community site through their involvement. With the community campus it shares with the Wavell.

"It is going to be hard work but it is going to be exiting times," she said.

"We will strive to make sure that our children don't suffer in any way from the move."

Mrs Dawson said the move would allow Students to have dedicated facilities for a number of subjects that

currently they had to share at their current home in North Camp.

The extra sports facilities would also fit in well with the school's sports college status and its commitment to physical activity learning, she said. The proposals had the support of Rushmoor Borough Council, the county council said.

When the relocation goes ahead, community staff currently employed by Oak Farm School would become employees of the Samuel Cody College instead, and a series of meetings with community groups would be held to explain the situation and plan future provision, the council promised. The plans also include a commitment to spend around €645,000 on adaptations to the schools buildings before the pupils turn up to their new school buildings in September next year.

Our Ref: ARO/11001487
14 November 2007

Ms Ann Begley
County Services Manager
Hampshire County Council, Education
The Castle
Winchester
Hants, SO23 8UG

Dear Ann

I am writing to you on the recommendation of Alex Munro after I had contacted him re. his e-mail of 23.10.07 about the Aldershot Urban Extension and his comment about secondary provision being part of BSF. He recommended that I also copy in Bob Eardley, Glenn Parkinson, David Kirk and Alex himself. I have included my Chair of Governors, Nigel Baines, Chris Holt (as he was part of Alex's e-mail) and Andrew Lloyd as Rushmoor Borough Council leader. I know that you are already aware of my strategic thinking for both the Wavell School and the local community and I have appreciated your support over this. However, events have continued to impact on the school and the local area since our last meeting, and I would like to collate our findings herewith so that they can be considered within the BSF programme.

Community Building

In addition to the AUE there are 3 local building developments in hand, all of which fall into our catchment area (see map enclosed):

- 399 homes for the Queensgate Programme just across the road from the school so 100% our catchment (possible 80-100 extra students)
- 350 homes for the Concept 2000 programme north along the A325 again 100% our catchment (possible 70-90 extra students)
- 480 homes for the Farnborough Central programme – (Alyson Pollard is aware of this one I think) which is partially in our catchment area (possible share of 110-120 extra students)

We are also aware that the AUE will prove to be another pressure point for us as **in reality** parents from that area send their children to us out of preference.

Net Capacity

Our Net Capacity officially stands at 850 and yet this academic year we have risen to as high as 860 with a maximum NOR of 874 (if all years were full at the

same time, ie. Military turbulence not to hit any year group within the year). You are aware that I spoke to Glenn on several occasions about my concerns about lack of teaching space and indeed, met with you and Louise Brierley about the matter. I was very disappointed not to receive support for my request for a temporary building for this academic year and this has put us under a great deal of pressure as you can see from our Usage Grid. Furthermore, our investigations into the Net Capacity data have shown up several errata:

4 named spaces have been misrepresented meaning that 93 spaces are not work spaces as they are no longer part of classrooms since build over the years has changed their usage:

- Space number 30 (30 work spaces) has been the Main Office for many years
- Space number 100 (30 work spaces) has been the staffroom for many years
- Space number 134 (16 work spaces) has been the Adult Education/ Campus Office for many years
- Space number 126 (17 work spaces) has been the science office area for the last 5 years.

I would like to request a thorough review of our Net Capacity with HCC so that we can have an accurate report. If Net Capacity is based on a school's IAN (ours is 170 multiplied by 5) but our PAN is

174 multiplied by 5 then we immediately have a problem. We were told last year that 870 students on roll would put our utilisation factor at 95% so as the MOD stabilises and our popularity increases when we are full at 874 then we will be asking the impossible of rooming the timetable with over 95% utilisation. We have been informed that 75% is the advised "notional utilisation figure" and yet we are already well over that (see grid) even without acknowledging the 4 above errata.

School Strategic Staffing Programme

In response to our growing numbers both generically but especially regarding our SEN population , which has more than doubled in every category over the last 3 years, we have been increasing our staffing ratio. The school therefore would not have any budgetary pressures if it were allowed to grow as we have a staffing infrastructure in place. Over the last 3 years we have gradually moved from a 6 teaching group structure to 7 in response to the ever-increasing SEN challenges.

On the flip-side this increase within the extreme space restrictions has led to a negative impact on teaching and learning because of increased staff mobility and use of spaces not designed for the number of learners required:

- 28 teachers teach in more than 1 room
- 58% of teachers have to move classroom because of demands on rooming of timetable
- 19 science lessons cannot take place in a science lab (science is at 99% utilisation/ we are 1 science lab short)
- 219 lessons are taught in "inconsistent" rooms *much lower*
- Over 25 students cannot study their preference of Food Technology each year as we have only 1 room (we do have 2 teachers) and this is in a Technology College which is a Centre of Excellence for Food Technology
- Every space within Design Technology is only 71% of the legally recommended size (see enclosed B. Cooper Strategic Development Report May 2006)

We are being recognised as a popular and successful school for Training at PGCE, OTT and GTTP levels and yet we do not have a Conference/Meeting Room facility since we have had to turn it over to be a classroom.

Special Needs

Our ever-increasing SEN population , now at 21% with a 25% increase in one year, means that most lessons require the space to have 2 adults working within it. The Faculty Team stands at 11 plus 3 SEN teachers. For the new Year 7 cohort of September 2008 we will need to employ a further 2 LSAs bringing the Faculty to 16 members. We showed the tiny SEN working space to Glenn Parkinson last year and had hoped that he would support us with our request for expansion but this proved not to be. We take ECM very seriously and yet feel that we are letting down our most vulnerable and the staff who support them through this very worrying lack of space. We have provided a small office space for our new ELSA to work with her students by my Senior Deputy Headteacher relinquishing his office to her!! We have been in contact with Peter Cawte about the increasing trend of Speech and Language Impaired students coming to the Wavell from the Guillemont Special Unit and

expressed again our interest in working with the LA as possibly the local area's Special Secondary Unit for such students . We could only do this if we were supported with building and resources. Can this be considered within the BSF strategy?

Admissions

County know from my work in the past with them and in my role on the Admissions Forum that I want the Wavell to be a true community and catchment school. It is my aim to have 100% in-catchment students attending and you will have noticed that this number has been increasing with it standing at 81/174 in 2005-6 and moving up

to 106/174 last year. Now that another of our in-catchment primary schools has been linked to us we are confident that this number will increase yet again for 2007-8. (Please note however, that many of the children attending our newly linked St Peter's, will live out of catchment so their "categorisation" will be interesting data!). The LA responded positively and supportively to my letter regarding the small numbers of in-catchment children available to me until this year (2 of my 3 Link Schools are shared and my sole Link School is very small). Please also note that one of these 3 Link Schools is also located out of catchment so any children who have chosen to come to us have immediately been called "out-of-catchment" which is ironic. The in-catchment children who chose not to come to us go either to Farnborough Hill and Salesian; our local Independent Schools or are bussed to All Hallows across the border if catholic.

On average we receive 220 "First Preference" (as was called) applications so can confidently fill our PAN at 174. We are regularly 46-50 spaces oversubscribed. There are several reasons why we take a good number of out-of-catchment children:

- Talavera (Link School) is out-of-catchment
- St Peter's (new Link) has many children who live out of catchment
- The sum total of children available to us from our Link Schools has been well below 174
- Our geographical location (at the southern end of our catchment and so close to the Surrey border) has meant many out-of-catchment parents see us as their "local school".

Re-Cladding Programme April 2008-09 Phase 1

We are thrilled about the news that we are going to be part of the Re-cladding Programme Phase 1 for April 2008 but have been told that this will require 2 spare classrooms for the rotation process. Bearing in mind our current utilisation factor can you please see this letter as my official request for a temporary 2-classroom build for next year to facilitate this refurbishment programme.

New Deals for Schools

Over the last 3 years I have worked with Glenn Parkinson, Peter Fursman and Bernard Cooper on my request for support from the NDS regarding Design Technology to no avail. Can I please officially request this again through this letter. If there is no funding for D & T, could I please ask to be considered for any of the areas currently well over their utilisation factor (see below and grid enclosed).

Utilisation Factors

We are currently at 86% utilisation and this does not include the small group spaces required by our 11 LSAs! We have avoided it being even higher than 84% because of our excellent cross-curricular ICT programme which helps provide essential space on the timetable. Areas of major concern are:

Maths	91%	
Languages	92.5%	
Expressive Arts	87%	
Music	90%	We have to teach 21 music lessons above recommended capacity for our 1 room

Only 3 subject areas are below 75%:

English	71%	We had to convert our 2 nd drama space for this
Humanities	71%	We had to convert our Conference Room/Inclusion Room
ICT	53%	We are a 14-19 ICT Spec. Dip Pathfinder School so have to have space for this capacity

Community Cohesion

We take Community Cohesion very seriously and over the past 3 years I have financed several new TLR posts for Liaison. Unfortunately, we have not always been able to facilitate space on site for these activities so my staff have had to travel to the partner school which is perhaps not as exciting or as supportive as it could be:

- KS2 Languages which helped establish our MFL Cluster
- EMA Leading Professional working very closely with HEMTAS

- SSCO for the NE Hants Partnership
- Music & Art Activity Days

Specialist Technology College

As a **Specialist Technology College** we have to and are happy to provide Community Support in our specialisms. These are more and more under threat:

- Primary science lab now has to be timetabled for our purposes so we have to transport our resources to the Primaries more and more
- KS2 D & T teacher has to take all her resources to the Primaries as we do not have space on the timetable for them to come here.

Extended Schools

I volunteered to be on the Rushmoor Steering Group for this programme and organised the first South Farnborough-Aldershot Workshop to launch the much-needed programme for this immediate area. As a Community Campus School and one offering Adult Education, there are already many demands being placed on the Wavell School but equally we are responding very effectively to the community demands. We are currently working very closely with Lionel Paris and Rushmoor Borough Council about our Partnership Agreement as our Extended School Programme is putting extra pressure on our Campus Programme. The site can no longer support 2 schools, both with Community Status and allow us to have a true Extended School role.

Both the Wavell School and the Samuel Cody School are flourishing and providing excellent support for their students but the site can no longer maintain this. Expansion is being restricted because of sub-station restrictions and the growth of both schools is being hampered. The Wavell has spent £90,000 Capital approximately over the last 3 years on the development of the general site (excluding Wavell -specific refurbishment) and yet we feel there is still so much more potential if we were to be allowed to have the sole use of the site. I have discussed this with the Headteacher of the Samuel Cody School as we both have Councillor Baines as Chair of Governors and there would be many advantages for both schools if we were to be placed on separate sites. Samuel Cody as a Sports College does not have the facilities required and yet there is a local secondary school with falling roles, facing closure, which has super sports facilities and plenty of space for an expanding Special School. Community Programmes could still be placed at Oak Farm, the catchment requires it, but still leaving space for the expansion of Cody within the same building.

I would like to request that the Wavell School is seriously considered and included in the Local Authority's BSF programme so that we can respond even more effectively as

- a 14-19 Pathfinder School for Rushmoor-Hart
- a truly community-minded Specialist College for our partner schools
- an Extended School specialising in Sport, and Anti-Obesity Programmes such as our Cook & Eat and Fit4Life programmes
- the Area's secondary school specialising in Speech & Language Impairment
- an official Training College for PGCE and Graduate Trainees
- the Area School supporting the LA in its current work with Primary MFL, EMA, Leading English Teacher-Outreach, and in the proposed areas of AST & Excellent Teachers in Languages & Science.
- the local school serving its expanding catchment from Concept 2000, Queensgate and Central Farnborough developments

I would welcome the opportunity of discussing the contents of this letter further with anyone included in its circulation.

Thank you again for the support you have so far offered me about the matter.

Yours sincerely



Amanda Rowley
Headteacher

Copies:

Bob Eardley	Lead Officer Capital Programme, HCC
Glenn Parkinson	Strategic Planning Officer, HCC
Cllr David Kirk	Hampshire County Council
Alex Munro	Education Officer, HCC
Chris Holt	Lead Officer School Organisation & Review, HCC
Andrew Lloyd	Rushmoor Borough Council Leader
Nigel Baines	Chair of Governors



Miss Amanda Rowley
Headteacher
The Wavell School
Lynchford Road
FARNBOROUGH
Hampshire
GU14 6BH

County Office
Children's Services Department
The Castle, Winchester
Hampshire SO23 8UG

Telephone 01962 846452
Fax 01962 842355
Textphone 0808 100 2484

Enquiries to Alex Munro

My reference SC/AM/2007/nov07/nov02amhr

Direct Line 01962 846462

Your reference

Date 14 December 2007

E-mail alex.munro@hants.gov.uk

Dear Amanda

The Wavell School

Ann Begley has asked me to reply on her behalf to your letter of 14 November which you wrote following my email to Aldershot headteachers about the urban extension. You will see that I have consulted a range of colleagues in preparing this response. I have followed the same topic order as in your letter.

Community building

I understand that Alyson Pollard has been in touch with you about the building developments you mention in your letter and it is probably best for you and Alyson to continue to liaise on the detail so that we are clear about the implications. Alyson and I check Aldershot Urban Extension data on a regular basis.

Net capacity

As you know, my colleague Gemma Wigman has revised the NCA and sent it to you for comment. I do not know which version of the NCA you were using but certainly the latest one held by the strategic planning team already included the four changes to which you draw attention on page 2 of your letter. We did discover, however, that room 182, used for Modern Foreign Languages, had not been designated as a teaching space and also that room 161 should have been listed as 28 rather than 27 basic workplaces. The effect of these additional workplaces is to raise the maximum workplaces from 920 to 943 and the minimum from 828 to 848.

The current net capacity of 870 gives a PAN of 174 (assuming 6 x 29 which I know in practice you do not operate). The new maximum and minimum capacity figures give an indicated range for the PAN of 169 – 188. If you accept the accuracy of the new figures, your current PAN of 174 is at the lower end of the range which at some appeals for popular schools has caused some difficulties. You say that, in practice, you operate a 7fe system and I wonder whether it might

Director of Children's Services
John Coughlan

be worth considering 175 as your PAN for 2009 which fits the 7 x 25 organisation pattern and is a more accurate reflection of what happens on the ground.

School strategic staffing programme

We note your comments about how the 7fe structure places additional pressure on school organisation, particularly on teaching staff who have no permanent base and also its effect on options. This letter makes several references to the Building Schools for the Future (BSF) programme and I am sure that this and a range of other related issues will be taken into account at the detailed planning stage.

Special needs

I have discussed your SEN situation with Peter Cawte and he confirms that your school is under pressure from parents seeking places from outside your area. Specifically in relation to children with statements, he points out that the special needs Code of Practice (section 8.62) states clearly that "*where an LEA proposes to issue a statement or amend part 4 of an existing statement, they **must** (DCSF emphasis) name the maintained school – mainstream or special – that is preferred by the parent.....*". There are, of course, three provisos, namely that the school is suitable for the child's needs, that the child's attendance is not incompatible with the efficient education of other children and, finally, is an efficient use of the LEA's resources. These provisos are more difficult to defend at the SENDIST than, for example, the provisos that are in the Code of Practice relating to mainstream admissions and I note in particular Peter's comments re 'reasonable adjustments'. In one of your notes you say that "it is a nonsense to give parental preference such weight". Whatever our personal views may be, local authorities have no option but to operate in accordance within the legal framework.

Specifically, you ask whether your lack of accommodation for your SEN team can be picked up as part of the BSF strategy. Provision for SEN is one of those key areas which I am sure will be considered as part of the County Council's BSF strategy and I know that you have also discussed it with Peter Fursman.

Admissions

I have discussed your comments on admissions with Sue Lantair and Martin Goff. The Admissions Forum has now agreed the link between St Peter's Junior and The Wavell and this certainly makes both practical and curriculum sense. As I suggested in my recent note to all the headteachers in the Aldershot area, BSF will give the local authority the opportunity to review the pattern of secondary provision throughout the county and look strategically at the long term needs of the Rushmoor area. Schools and other partners will be consulted as proposals are developed.

Re-cladding programme April 2008/09 Phase I

I have spoken with Peter Fursman about this and understand that you have already discussed the programme with him in some detail. Your request for a double temporary classroom has been noted but I have to say that the case would have to be compelling for this to be agreed.

New Deal for Schools

I have drawn this paragraph and the following paragraph on utilisation factors to the attention of Bob Eardley so that he can consider your request as part of the future NDS programme. Unfortunately, capital allocations for the next three years recently announced by the DCSF have resulted in a reduction of 30% in Hampshire's NDS funding from 2009/10 which will clearly make it more difficult to implement a full programme.

Community cohesion

We note your work in support of other schools and your community. The DCSF commentary on the duty laid on governing bodies by Section 38 of the 2006 Act to promote community cohesion concludes with a strong commitment "to a system of fair admissions which delivers for all pupils". You will recall that the government felt unable, in the light of strong opposition, to impose more stringent admissions criteria on aided schools and it is generally thought that this reference to community cohesion is an attempt to ensure that admissions policies are not divisive.

Specialist Technology College

We note the difficulties you are experiencing supporting Primary Science and D and T which reflect the current pressures on your timetable. I do not think there is any immediate solution to this issue other than to refer again to the forthcoming BSF project which will give the County Council an opportunity to analyse secondary accommodation issues at all schools both in the short and longer term and to take account of the additional demands of specialist status and other initiatives. Bearing in mind that the BSF investment strategy is designed to deliver an infrastructure which will be appropriate for the next 25 years and more, the secondary transformation agenda will have to address these and other needs to ensure all secondary schools are fit for purpose for the future.

Extended school

You state that, in your view, the site can no longer support two schools, both of whom have community status, whilst at the same time expecting The Wavell to perform a "true Extended School role". We note your suggestions about better ways of using both The Wavell/Samuel Cody and Oak Farm sites. When the local authority reviews the wider area as part of the BSF programme, a strategy for the most effective use of existing buildings and sites will have to be prepared which will need to include an assessment of how the substantial additional BSF funding can be used to bring maximum benefit to the community. The various initiatives you mention in your letter and the far-reaching effects of the changes to the 14 – 19 curriculum will certainly form part of such an assessment.

Your final page in which you set out seven major influences on future planning is a very helpful reminder of the complex network of initiatives which make additional demands on schools and which should be reflected in the physical provision made for them.

I have done my best to respond to the issues raised in your letter although I accept that, in a number of cases, I have been able to do little more than simply acknowledge your concerns and add, where appropriate, that the local authority has a need to consider them within the wider context of the area as part of the BSF investment strategy. The fact that the Aldershot Urban Extension project now appears to be moving forward will ensure that the Aldershot/Farnborough area retains a high profile in our future planning for students of all ages.

Yours sincerely



Alex Munro
School Organisation Officer

A A Camfield Chair of Governors

30 March 2012

Mr John Clarke
Deputy Director of Children's Services Education and Inclusion
Hampshire County Council Elizabeth II Court East
The Castle
Winchester
Hampshire SO23 8UG

Dear John,

Thank you so much for your offer to meet with us on Tuesday 24th April at 4pm. It will be in Conference Room 2 in the Blenheim Building. The Wavell colleagues in attendance will be,

Tony Camfield – Chair of Governors
Brian Hambleton – Vice Chair of Governors
John Grenham – Chair of Buildings and Site
Tanya Payne – Chair of Finance
Amanda Rowley – Headteacher
Norman Atkinson – Deputy Headteacher Pastoral
Martyn Baxter – Deputy Headteacher Personnel /Site Development /
Admissions
Stuart Hicken – Deputy Headteacher Curriculum

There are nine key questions we would like to discuss with you (see below) but these are not exclusive.

1. What size school does Hants think Wavell should be?
2. We do want to grow and for it to be organic with a ceiling of 1,200, to work to 1,125 which is Group 7. What are HCC LA thoughts?
3. Can the development of Wavell happen regardless of the AUE project?
4. Catchment rationalisation issues. What is HCC LA Strategic Plan regarding Wavell, Connaught and also any shared link schools plus any new AUE primaries?
5. What type of primary is anticipated, what specialism? What impact may this have on Talavera Junior and how do HCC LA see Talavera's future?
6. What are the time lines for these various developments with and without AUE?
7. What does HCC LA plan to do to improve the viability of Connaught School. What are the alternatives, Group 4 11 – 16? What is the Strategic Plan for Rushmoor schools?
8. When can we become a Group 7. What factors will initiate the change of group?

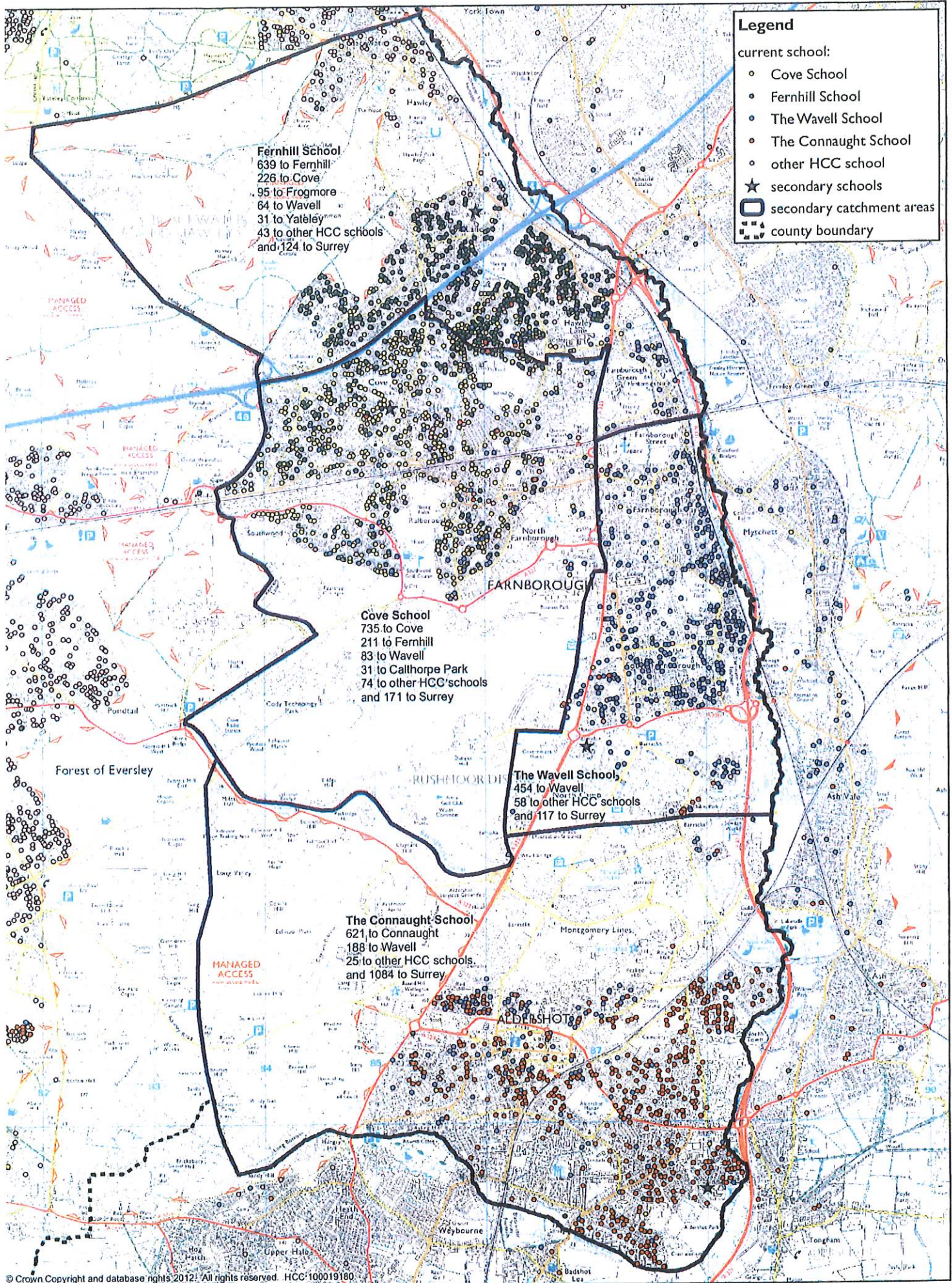
9. What is the HCC LA plan with the Education Centres, Linden Centre which will have Academy status and provide “sold services”? This is linked to the possible movement of Linden to the new Samuel Cody site which would release capacity for SFI school too, therefore what are the strategic plans in this area?

The key purpose is for us to gain clarity about both the Hampshire vision and the Wavell vision for the future of our School within the context of Rushmoor and an agreement regarding our draft proposals for the expansion of the Wavell School.

Looking forward to meeting with you.

Yours sincerely,

A A Camfield
Chair of Governors



Legend

current school:

- Cove School
- Fernhill School
- The Wavell School
- The Connaught School
- other HCC school
- ★ secondary schools
- ▭ secondary catchment areas
- county boundary

Fernhill School
 639 to Fernhill
 226 to Cove
 95 to Frogmore
 64 to Wavell
 31 to Yatley
 43 to other HCC schools
 and 124 to Surrey

Cove School
 735 to Cove
 211 to Fernhill
 83 to Wavell
 31 to Callthorpe Park
 74 to other HCC schools
 and 171 to Surrey

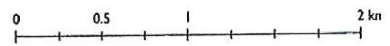
The Wavell School
 454 to Wavell
 58 to other HCC schools
 and 117 to Surrey

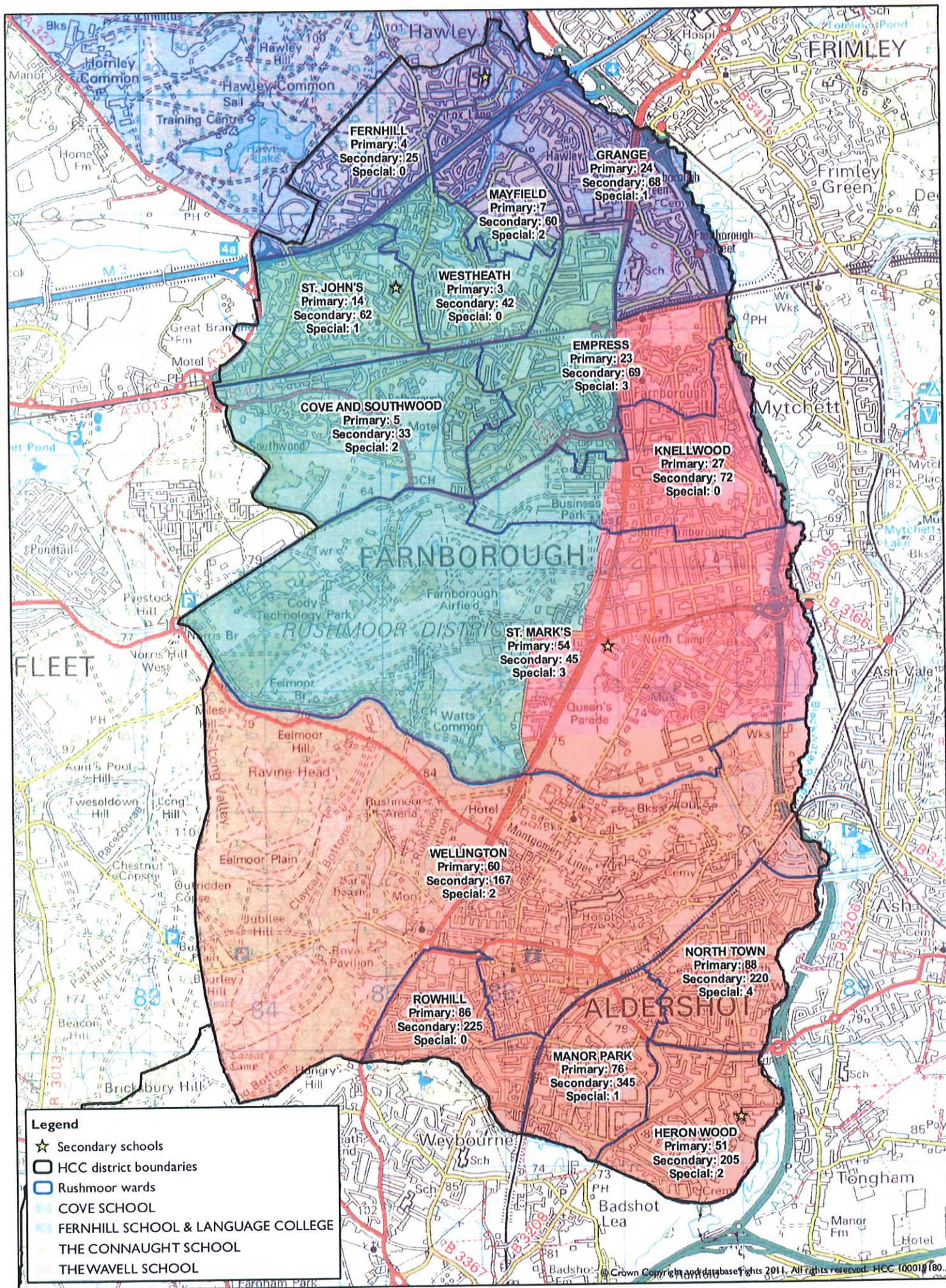
The Connaught School
 621 to Connaught
 188 to Wavell
 25 to other HCC schools
 and 1084 to Surrey

© Crown Copyright and database rights 2012. All rights reserved. HCC/100019180

**Rushmoor Secondary School Catchment Areas
 and Pupil Distribution**

Pupil data is from the Spring 2011 school census (Years 7-11)

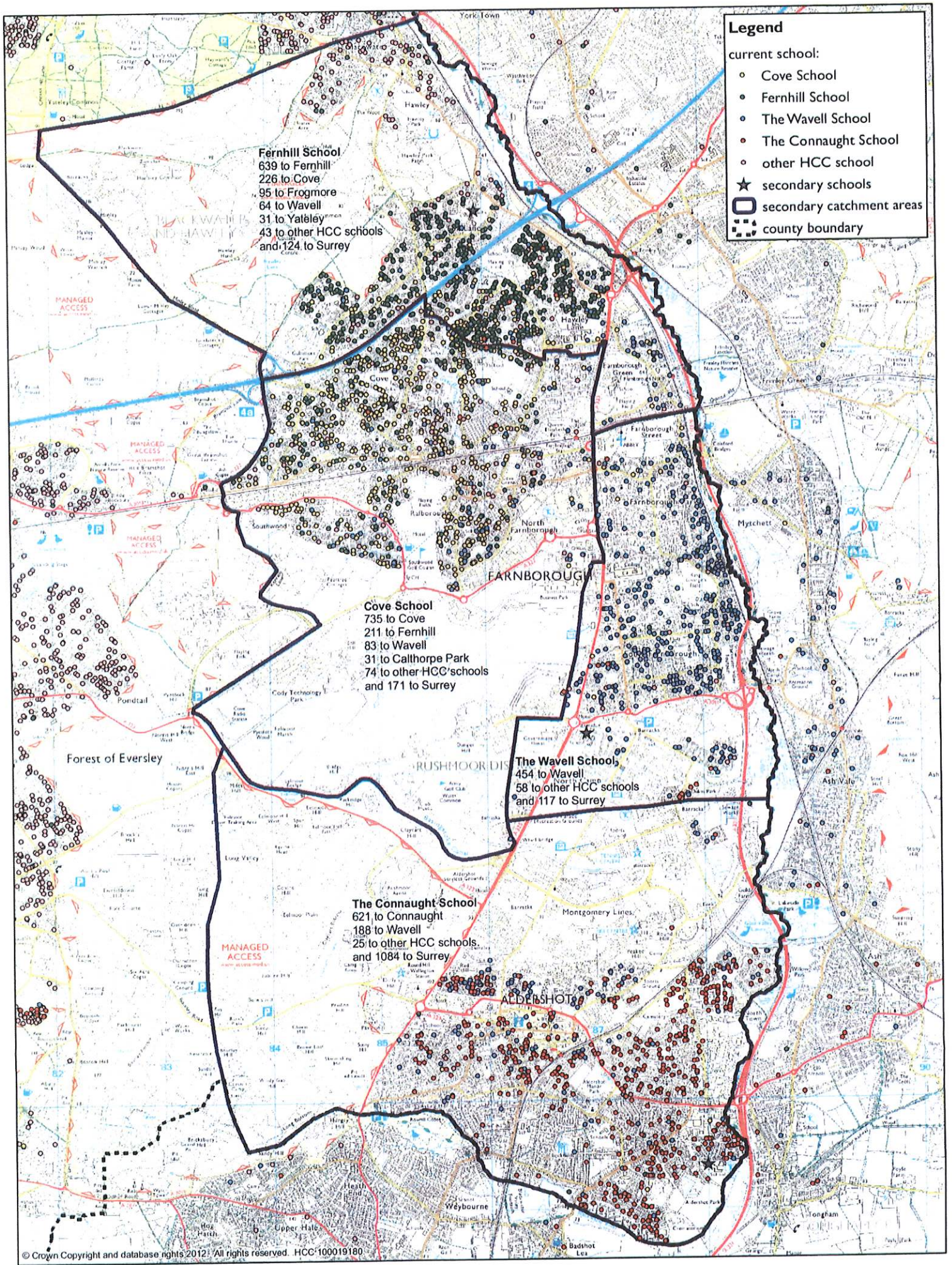




Legend

- ★ Secondary schools
- HCC district boundaries
- Rushmoor wards
- COVE SCHOOL
- FERNHILL SCHOOL & LANGUAGE COLLEGE
- THE CONNAUGHT SCHOOL
- THE WAVELL SCHOOL

**Rushmoor children in Surrey schools
 January 2011**



Rushmoor Secondary School Catchment Areas and Pupil Distribution

Follow-up re.
link/
Catchments

Kirsty Potter

From: Kirsty Potter
Sent: 05 December 2017 10:56
To: Goff, Martin
Subject: Planning Application
Attachments: Notification about receipt of Planning Application.pdf

Dear Martin,

Please see the attached of which you are probably already aware.

If the 180 houses go ahead just across the road from us, we would want to make sure that they become our catchment to ease admission and avoid appeals please.

Additionally, a logical choice of primary school for them would probably be the Cambridge Primary. If this were the pattern of choice, would it not make sense to link us to the Cambridge, again to ease transition and avoid appeals.

My governors are very keen to discuss this with you if it doesn't appear logical and requires further discussion.

Thank you

Amanda



Lead C&S

12 9 NOV 2017

Owner/Occupier
Wavell School
Lynchford Road
Farnborough
Hampshire
GU14 6BH

Contact Maggie Perry
Telephone 01252 398711
Email maggie.perry@rushmoor.gov.uk
Date 27th November 2017
Your Ref Blandford and Malta Barracks, ...
Our Ref 17/00914/OUTPP

Dear Sir/Madam

NOTIFICATION ABOUT RECEIPT OF PLANNING APPLICATION

OUTLINE: Planning application for the development of up to 180 dwellings (including the conversion of Blandford House and retention of three existing dwellings) including access, internal roads, demolition of buildings, amenity space, green infrastructure and sustainable urban drainage systems (Matters for Approval - Access Only) to include FULL approval of details for the provision of up to 13.7ha of Suitable Alternative Natural Greenspace (SANG) and associated car park (up to 18 spaces). at Blandford House And Malta Barracks Development Site Shoe Lane Aldershot Hampshire

Mr Alan Chitson has submitted a planning application to the Council. We are required to make a decision on the application by the 23rd February 2018 otherwise the applicant has a right of appeal to the Secretary of State.

We want to hear your views on this proposal. All comments must be made in writing. You can view and comment on the application online through our web site at www.rushmoor.gov.uk/publicaccess

You can also write in or send an email to plan@rushmoor.gov.uk quoting your name, postal address and reference 17/00914/OUTPP. Please contact us as soon as possible. The period for submitting your comments ends on the **18th December 2017**. If your comments are received late you may miss the opportunity of having them taken into account before a decision is made.

If you do reply to us by email, or supply an email address, we will respond to you by email. If you require your personal details to be omitted from public view ie. email address or telephone number, please let us know in writing.

Unless you specifically ask, we will not acknowledge the receipt of your comments. Your views will however, be taken into account when a decision is made on the consultation. If you make comments, we will notify you of our decision.

Amanda Rowley

From: Crolla, Louise
Sent: 24 September 2018 09:33
To: Amanda Rowley
Subject: RE: Wavell Catchment and Linked Schools

Hi Amanda,

I hope you had a nice weekend. I am e-mailing regarding our meeting this afternoon. It has just come to light that there is a new housing development coming at Malta Barracks which is going to have significant implications in regards to catchment areas in Aldershot. In light of this, I think it is probably best that we cancel our meeting for the time being as there will need to be a much wider meeting, with our strategic development colleagues, to undertake a more detailed review of the catchment areas for Wavell, Alderwood and Cambridge. I hope this is ok. I will liaise with Glenn Parkinson, Strategic Development Officer, to get a new date in the diary.

It is quite possible that with potential catchment changes in the pipeline, the issue of linking Cambridge with Wavell might resolve itself naturally, but if you would still like the local authority to pursue making Cambridge a linked school for 2020 admissions, let me know. I will of course need to seek the views of both Alderwood and Cambridge and all responses would need to be considered by Forum, but under the current catchment arrangement, it seems like a reasonable step given that Cambridge is geographically closer than Talavera Junior which although out catchment, does link to Wavell,

Kind regards

Louise Crolla
Principal Admissions Officer
Admissions Team, Hampshire County Council,
Children's Services Dept, Elizabeth II Court North,
The Castle, Winchester, S023 81JG
Tel: 01962 826902
Fax: 01962 845093
E-mail:

From: Amanda Rowley
Sent: 23 August 2018 15:44
To: Crolla, Louise
Subject: RE: Wavell Catchment and Linked Schools

Super,

Thank you Louise.

Amanda

From: Crolla, Louise
Sent: 23 August 2018 15:34
To: Amanda Rowley
Subject: RE: Wavell Catchment and Linked Schools
Hi Amanda, thanks for confirming.

I don't expect that we will need more than an hour. I'll have some maps / data and so I don't think there is anything that you need to bring.

See you in September!

Best wishes
Louise

From: Amanda Rowley
Sent: 23 August 2018 15:31
To: Crolla, Louise
Subject: RE: Wavell Catchment and Linked Schools

Louise

That will be fine. I'll need to leave by 3.15pm as I have SLT after school.
Is there any info you need me to bring?

Best wishes

Amanda

From: Crolla, Louise sent: 23 August 2018 09:24 To: Amanda Rowley
Subject: RE: Wavell Catchment and Linked Schools

Hi Amanda,

How about 2pm on Monday 24th September at Alderwood Seniors?

Kind regards
Louise

From: Amanda Rowley
Sent: 13 August 2018 14:05
To: Crolla, Louise
Cc: Goff, Martin; Potter, Kirsty
Subject: RE: Wavell Catchment and Linked Schools

Louise

I am free 6th 7th 10th, 11th, 14th, 19th 20th 24th 25th, 28th September currently.

Thank you

Amanda

From: Crolla, Louise
sent: 03 August 2018 15:56
To: Amanda Rowley
Cc: Goff, Martin
Subject: RE: Wavell Catchment and Linked Schools

Hi Amanda,

I hope all is well.

I am writing in response to your e-mail to Martin below. Would it be possible for us to get together early in September, along with Clare de Sausmarez, to talk about Cambridge Primary in terms of secondary admissions and how best we might resolve the issues you quite rightly highlight moving forward?

I can come to Aldershot if either you or Clare are happy to host in school or we can meet here if you prefer somewhere neutral. If you could let me know your availability during September, I will liaise with Clare and see if we can come up with a suitable date.

Kind regards

Louise Crolla
Principal Admissions Officer

From: Amanda Rowley
Sent: 10 July 2018 17:32 To: Goff, Martin 'Andrew Morgan'
Subject: Wavell Catchment and Linked Schools Importance: High

Dear Martin

I have copied in Brian and Andrew as Brian is stepping down as our FGB Chair and Andrew has taken up the Chair role so it is important that both are involved in the ongoing request from the Wavell for a more rational catchment and set of linked schools.

During the latest programme of Yr6 into 7 appeals it has become more and more apparent that families moving into Wellesley are fully expecting to be able to go to their nearest secondary school, the Wavell. There is an understandable presumption on their part that they will be living in our catchment and therefore be given a place here when requested via the Admissions process. They understandably do not want their child to have to walk a few miles to Alderwood across Aldershot.

This issue is going to become all the more worrying once Cambridge Primary opens.

Can we please request AGAIN that our catchment is reviewed to take in the new Wellesley build and that Cambridge Primary is at least a shared Link school for us. We would like both to be resolved for 2019 admissions please as we have been requesting this for a few years now so I think we have fitted the timeframe for such a request,

Best wishes

Amanda

Amanda Rowley

From: Kirsty Potter
Sent: 19 October 2018 11:48
To: Amanda Rowley
Subject: FW: The Wavell School

Follow Up Flag: Follow up
Flag Status: Flagged

Categories: Yellow Category

From: Crolla, Louise [REDACTED]
Sent: 19 October 2018 10:59
To: Kirsty Potter [REDACTED]
Subject: RE: The Wavell School

Admissions

Hi Amanda,

I agree that it would be sensible for Alderwood and Wavell to have shared linkage and this is something we can try to achieve for 2020/21 if all parties are agreeable.

Admission Forum is meeting on 1 November 2018 to consider requests from schools in regards to changes to policy for 2020/21 and so it would be helpful to have something in writing outlining their reasons for wanting to add Cambridge as a linked school.

Paragraph 1.15 of the School Admissions Code says that:

*"Admission authorities may wish to name a primary or middle school as a feeder school. The selection of a feeder school or schools as an oversubscription criterion **must** be transparent and made on reasonable grounds.*

We have discussed how the geography supports its inclusion but is there anything else you would like to add? There would be an expectation that Wavell would have the same links with Cambridge that it has with its existing linked schools, such as linked curriculum planning, shared resources, arrangements for primary school pupils and staff to visit the secondary school to aid in transition or visits to the primary school by secondary school staff to support transition or the curriculum. It would be useful if you (and Cambridge) could confirm this is the intention.

Assuming Forum's approval, HCC would then formally consult on the proposed change as part of the public consultation which will go live in December. There would be no need for you to carry out your own consultation. Alternatively, if you prefer to have more time on this, we could park it for now and revisit for 2021/22 admissions. Did Cambridge give any indication of when they might want to achieve this by, bearing in mind no Year 6 pupils at present?

In regards to our postponed meeting, Glenn Parkinson has advised that any catchment changes won't happen until 2021 at the earliest and so with no immediate rush, it is something that Gemma Bowry will likely pick up when she returns from maternity leave in November. He did say that they will need time to review all of the possible scenarios before discussing with schools. So for now, we are just looking at the linked school element. I am happy to meet if you still think it would be helpful, although my availability is very limited at the moment.

Kind regards

Louise Crolla

Principal Admissions Officer

Admissions Team, Hampshire County Council,
Children's Services Dept, Elizabeth II Court North,
The Castle, Winchester, SO23 8UG

Tel: 01962 826902

Fax: 01962 845093

From: Kirsty Potter
Sent: 19 October 2018 09:50
To: Crolla, Louise
Subject: The Wavell School

Dear Louise

I met with Sarah Kennedy, Headteacher Cambridge Primary on Wednesday to discuss the possibility of linked status. We agreed that it might be more supportive of Alderwood if it were a shared linkage. Is it possible for us to have the postponed meeting before 21st November as I would like to be clearer for my FGB on 21st with regards to the Admissions arrangement consultation. I need us to be clear as to why we are consulting with regards to possible changes.

Thank you

Amanda

CONFIDENTIALITY NOTICE:

This e-mail and any accompanying documents may contain confidential information intended for a specific individual or company. Any views or opinions presented are solely those of the author and do not necessarily represent the views and opinions of The Wavell School. This information is private and protected by law. If you are not the intended recipient, be advised that you have received this email in error and are hereby notified that any disclosure, copying or distribution, or the taking of any action based on the contents of this information, is strictly prohibited. If you have received this email in error please advise us immediately by replying to this email or contacting The Wavell School on 01252 341256. Once you have notified us please delete and destroy all copies of this email.

LIABILITY NOTICE:

We make every effort to keep our network and emails free from viruses. You should however, check this e-mail (and any attachments) for viruses. The Wavell School does not accept responsibility for any losses incurred as a result of a virus being transferred via this e-mail or any associated files.

~~KIRSTY POTTER~~

From: Amanda Rowley
Sent: 18 January 2020
18:09
To: Kirsty Potter
Subject: FW: Wavell
Catchment

Please print off trail and save for me to reply.

From: Bowry, Gemma
Sent: 16 January 2020 16:17
To: Amanda
Cc: Crolla, Louise Goff, Martin
Subject: FW: Wavell Catchment

Dear Amanda

Louise shared your email with me. My apologies for not responding on this point sooner. The question of the secondary catchment for Wellesley remains under review but there is no immediate urgency to make any changes. The current forecast isn't showing any over subscription from within catchment in Aldershot until 2024/25 (with Alderwood at 170), and the first cohort from Cambridge wont transfer for another 5 years. Currently there are equal numbers of secondary age Wellesley children attending the Wavell and Alderwood.

In the long term, we would expect between 4fe and 5fe of secondary age children coming from the Wellesley development, all of which are unlikely to be accommodated within Alderwood. Alderwood do however have the capacity in the short term to accommodate additional children, so the intention is that Alderwood School remain as catchment for the time being. As the development builds out further we will be able to consider how and when either school needs to be physically expanded.

Kind regards

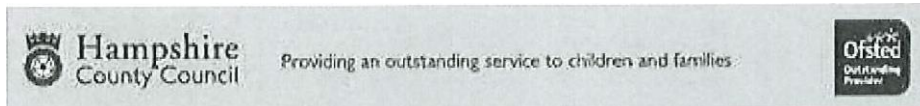
Gemma Bowry

Strategic Development Officer

Hampshire County Council

Children's Services Department, 3rd floor Elizabeth II Court North, Winchester, SO23 BUG
Telephone; 01962 846686
Fax: 01962 842355
E-mail:

Please note my working days are Monday, Tuesday, Thursday and Friday



From: Amanda Rowley
Sent: 09 January 2020 13:59
To: Crolla, Louise
Cc: Goff, Martin

Subject: Wavell Catchment

Importance: High

Dear Louise

Happy New Year!!

Thank you for investigating the Linked School aspect. I will feed this back to the governors.

What is happening in re. our request for a more equitable catchment which includes the new Wellesley build as requested in our email of 18th November and those in 2017 and 2018? Our governors would like to discuss this further with HCC please.

Thank you.

Best wishes

Amanda

From: Crolla, Louise

Sent: 09 January 2020 13:50

To: Kirsty Potter

Subject: RE: The Wavell School

Dear Amanda, HNY

We raised the subject of Cambridge being named as a linked school again with the headteacher Sarah Kennedy (at present the school is linked to neither Alderwood nor Wavell). She felt that it was still too early and unnecessary for the governing body to conclude the conversation about linked secondary schools as they only currently only have children in Year R and Year 1. Also, with the development incomplete, the layout of the area which will impact on children's journeys to school (e.g safe walking routes etc) has not yet been established. We advised her that Talavera Junior currently links to both Alderwood and Wavell and she confirmed that she wants to support both schools but was mindful that the school has been built to support the new AUE development, both of which sit within Alderwood's catchment area.

So at the moment, no change but it will need to be revisited sometime in the future.

Kind regards

Louise Crolla

Principal Admissions Officer

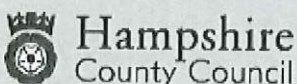
Admissions Team, Children's Service Dept.

Hampshire County Council, Elizabeth II Court North,

Winchester, Hampshire, S023 8UG

Tel: 01962 826902 HSPN: 826902

E-mail:



Providing an outstanding service to children and families



From: Kirsty Potter
Sent: 09 January 2020 11:03
To: Crolla, Louise Subject: RE: The Wavell School

Dear Louise

Thank you for your email back in November, I have the topic on the FGB agenda on 29th January and it would be helpful if I could give them an update regarding whether this has been discussed at your end since 19th November.

Many thanks

Amanda

From: Crolla, Louise
Sent: 19 November 2019 09:29
To: Kirsty Potter
Cc: Goff, Martin; Bowry, Gemma; Slocomb, Heather
Subject: RE: The Wavell School

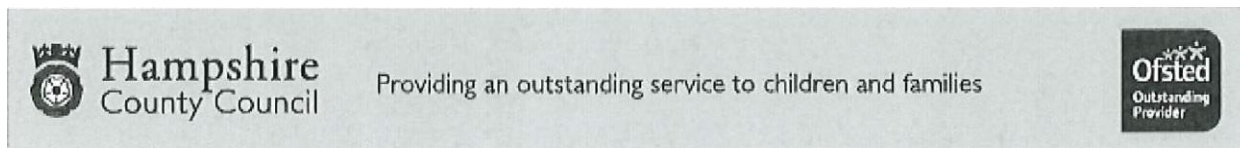
Hi Amanda,

Thank you for your e-mail. We will consider your request. Unfortunately it is too late to make any changes to the 2021 admission arrangements as these are due to go out to consultation at the end of this week but we will aim to reach a decision ahead of consulting on the 2022 admission arrangements.

We will let you know the outcome of your request in due course.

Kind regards

Louise Crolla
Principal Admissions Officer
Admissions Team, Children's Service Dept.
Hampshire County Council, Elizabeth I I Court North,
Winchester, Hampshire, S023 8UG
Tel: 01962 826902 1-ISP: 826902
E-mail:



From: Kirsty Potter
Sent: 18 November 2019 10:25
To: Goff, Martin
Subject: The Wavell School

Dear Martin

I am mindful of the need to follow up on previous emails (see attached 5th December 2017, new build and 24th September 2018, follow up).

I am mindful of the appeals that I face not only linked to main rounds but also for casuals and I would once again like to request that we are a joint Link School for Cambridge Primary, in support of parents who are moving into all the new housing around the Wavell School.

Wavell's catchment continues to be the smallest of the 4 Rushmoor Secondary schools and we would like to once again request that the new Wellesley housing area is added to our catchment and that we make sure that the attached housing be included in our catchment.

My governors and I are very happy to discuss this further with you.

Kind regards

Amanda

Amanda Rowley
Headteacher
The Wavell School
Tel. 01252 341256

From: Kirsty Potter
Sent: 10 March 2022 10:34
To: Amanda Rowley
Subject: FW: Hampshire School Places 2022-2026
Attachments: Fw: Wavell Catchment
Follow Up Flag: Follow up
Flag Status: Flagged

Dear Amanda,

The position continues to be as described in my attached email from 2019. Alderwood remains as the catchment school serving the development and is able to accommodate additional pupils initially with (we predict) minimal building required. We are just starting the process now to consider the accommodation available. As explained previously, we would anticipate between 4 and 5fe from Wellesley so we will continue to monitor, as it builds out, what is required and where.

Thank you
Gemma Bowry

Strategic Development Officer
Hampshire County Council

Children's Services Department, 3rd floor Elizabeth II Court North, Winchester, SO23 8UG Telephone: 07590939303

Please note my working days are Monday, Tuesday, Thursday and Friday

From: Colenutt, Peter
Sent: 09 March 2022 11:16
To: Potter, Kirsty
Cc: Bowry, Gemma
Subject: RE: Hampshire School Places 2022-2026

Good morning, Kirsty and Amanda,

Gemma has the lead for school places in your area and I have asked her to respond to your email with an update of the current position.

Best wishes, Peter

Thank you, Peter

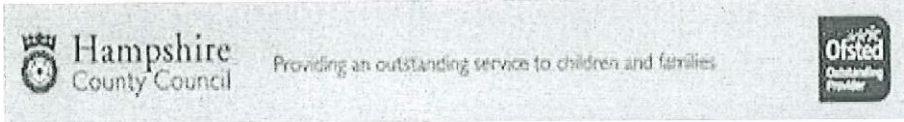
1

Peter Colenutt MBE
Assistant Director
Strategic Development and Capital Delivery

Children's Services and Adults' Health & Care,
Hampshire County Council and Isle of Wight
Council Tel: 01962 846270

PA: Jo Faithfull 01962 846270

Peter Colenutt, Vice Chair of EBDog National Executive - www.ebdog.org.uk



From: Kirsty Potter
Sent: 08 March 2022 11:18
To: Colenutt, Peter
Subject: Hampshire School Places 2022-2026

Dear Pete

On reading Appendix 6 that you shared with us and the Resources and Planning Committee last week, I was disappointed to read that a decision had been made regarding Rushmoor School expansions without any recent conversation with the Wavell School. We note that the potential school expansion is for Alderwood Secondary School for 1fe or 2fe for 2026 or later. Could you please explain why the decision has been made for just Alderwood and therefore to be no involvement in the expansion of Wavell.

We have throughout the years expressed grave concern regarding the small size of our catchment compared to the other 3 Rushmoor Secondary Schools and our consequential reliance on out-of-catchment admissions. There appears to be no action to protect or grow the Wavell in your programme and yet we appear to be the preferred choice amongst the parents who are moving into the new build.

My Governing Body will be very keen to talk to you.

Kind regards

Amanda

Amanda Rowley
Headteacher
The Wavell School
Tel. 01252 341256